

Levitante Quick- Change

TECHNICAL PRODUCT SHEET



L5617

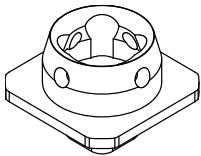


Levitate Quick-Change Adapter

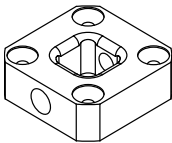
Have the user go from walking to running in no-time with the **Levitate Quick-Change adapter**.

The QC adapter comprises 4 distinct parts: the fastening pin, the male connector, the base plate, and the female connector. Using the pin along with the base plate and either the male or female quick connector enables users to interchange prosthetic feet or knees in mere seconds. Its design aims to simplify daily tasks and promote easier physical activity by reducing the need for multiple sockets.

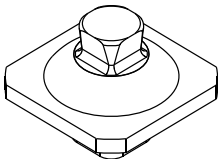
Adapters can be sold as a bundle, or as separate components.



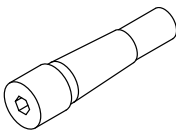
Female QC



Baseplate QC



Male QC



Pin QC

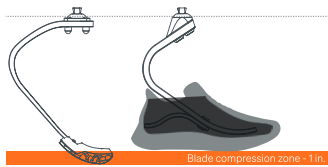
• **Standard 4-hole System**

The baseplate can be fastened to most prosthetic devices using its four-hole configuration with a 36 mm spacing.

• **Multiple feet range**

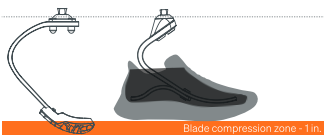
Safety and freedom in one solution. Allow the user to swap between feet on their own terms with a reliable and secure locking system. The QC adapter allows the user to swap between two compatible feet sizes like the Levitate Blade 8" and the Levitate Forever 7".

Blade 10" and Forever 9" Compatibility



The Levitate Blade 10" and Levitate Forever 9" are built to fit together - when wearing a shoe on the Levitate Forever, the blade is designed to be approx. 1 in taller to compensate for blade compression and hip alignment.

Blade 8" and Forever 7" Compatibility



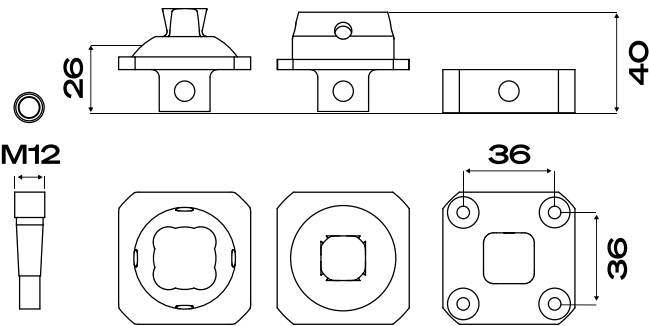
The Levitate Blade 8" and Levitate Forever 7" are built to fit together - when wearing a shoe on the Levitate Forever, the blade is designed to be approx. 1 in taller to compensate for blade compression and hip alignment.



Purchase combinations

- Baseplate QC + Male QC + Female QC
- Baseplate QC + Male QC x 2
- Baseplate QC + Female QC x 2

Technical specifications [mm]



Max. patient weight 130 kg
Warranty 24 Months
Impact level Low to High

Component	Material	Weight	Threads
Pin QC	Stainless Steel	25	M12
Baseplate QC	Aluminum	85	M12
Female QC	Aluminum Titanium	70 118	M8
Male QC	Aluminum Titanium	78 124	-